

NEW HERE?

It is wonderful to have you as our guest this morning! The **New Hope Register** will be passed your way during the service. Please fill it out each week in order for us to get to know you, pray for you specifically, stay in touch with you and help you get connected @ New Hope.

WHAT'S HAPPENING THIS MORNING?

ADULT BIBLE FELLOWSHIP @ 9:00 & 10:45am

"Impacting the Next Generation for Jesus" | Room 2

NEW HOPE STUDENTS GOSPEL PROJECT @ 9:00am

Middle School | Room 1 High School | Youth Center

NEW HOPE KIDS SUNDAY SCHOOL @ 9:00am

2nd & 3rd Grade | Room 6 PK-1st Grade | Room 4/5
4th & 5th Grade | Room 3 3's & 4's | Room 7
Newborn-2's | Room 8

NEW HOPE CHILDREN'S CHURCH @ 10:45am

3's-2nd Grade | Room 6 Newborn-2's | Room 8

ORDER OF WORSHIP | 9:00 & 10:45am

Welcome & Greeting

Worship through **MUSIC**

Worship through **PRAYER**

Worship through **OFFERING**

Worship through the **WORD**

Build One Another Up (Rom. 14:1-23)

Pastor Tom Hein

Worship through **COMMUNION**

Worship through **RESPONSE**

THIS WEEK

TODAY

- ⇒ ABF "Impacting the Next Generation for Jesus" | 9 & 10:45am | Room 2
Today's Topic: *Transitioning into Adulthood in a Crazy Culture*
Next Week's Topic: *Teen Anthropology: What to Do When Our Kids Know More Than Us.*
- ⇒ Congregational Meeting | After Second Service | Worship Auditorium
- ⇒ HS Missional Community | 4:00-7:00pm | Church Building

MONDAY

- ⇒ Ladies Coffee and Conversation | 6:30 pm | Mickie Kinney's Home

WEDNESDAY

- ⇒ Women's Bible Study | 10:30am | Youth Center
- ⇒ MS Missional Community | 6:30-8:00pm | Youth Center
5th graders welcome through May 17

THURSDAY

- ⇒ Men's Legacy Meeting | 6:30-7:15am | Church Building

Memorial Day Weekend Through Labor Day Weekend

9:00-10:15am ONE Worship Service with Nursery and Children's Church for infants through 2nd grade.

10:30-11:30am Adult Bible Fellowship in the worship auditorium with childcare for infants through 5th grade. MS Students *Gospel Project* will meet in Room 1 and HS Students will join ABF in the worship auditorium.

Adults Get Connected!

We believe weekend gatherings are only the beginning of our spiritual walk. We grow and connect when we are in community. Small groups, as well as, men's and women's groups are a great way to meet new friends, learn about God and His Word, and become a disciple-maker yourself. Call, text or email Bob or Teresa Hall at 515.360.2212 or at behall@aol.com to get connected at New Hope.

COMING SOON

May 8 | Ladies Coffee and Conversations

All ladies are invited to a time of coffee and conversation the 2nd Monday of every month at 6:30pm at the home of Mickie Kinney (1122 S. 12th Street, Adel). Come get to know other New Hope Ladies in a casual and laid-back setting!

May 20 | Saturday Morning Coffee and Conversation

Monday night C & C is so much fun that we have decided to also have it on the first and third Saturday of every month at Evans Park during the summer. So now you have three times a month to hang out with other New Hope women! Bring your coffee, kids, or just yourself on Saturday, May 20 at 8:30am to Evans Park!

May 21 | Graduation Sunday

We will have a slideshow with pictures of the graduates. If you would like your senior to be included in the slideshow please turn in a few pictures (baby, elementary, senior picture) either by email or hard copy to the office by Monday, May 15.

May 26 | End of School Party

We will have a party to celebrate the end of the school year on Friday, May 26 from 5:00-9:00pm at the youth Center.

June 10 | Ladies Night Out

Save the date for a ladies night on Saturday, June 10! Come join us to watch "Moms Night Out" at the church at 6:30pm. Bring your favorite movie snack to share and a comfy lawn chair to lounge in. Following the movie, there will be a bonfire with s'mores. Feel free to come for the movie, the bonfire, or both!

July 30-Aug 3 | VBS

Mark Your Calendars! New Hope VBS is July 30-August 3 this year from 6-8pm. Registration is now open at newhopeadel.org for Preschoolers (4 years) to 5th grade. If you are interested in helping with VBS this year contact Samantha Schwenneker or Kris Hickman. There is a meal provided for volunteers and their families each night prior to VBS. There will be nursery available for infants and toddlers if you're helping with VBS.

Who are we?

NEW HOPE VISION

MISSION | We are a community of Jesus' disciples living in truth, developing relationships, on mission with God.

VALUES | Love, Grow, Go

NEW HOPE TEAM

STAFF

Tom Hein | Lead Pastor — Tom@newhopeadel.org
Jeff Abbas | Worship Leader — Jeff@newhopeadel.org
David Hickman | Interim Staff Assistant — David@newhopeadel.org
Teresa Hall | Director of Children's Ministry — Teresa@newhopeadel.org
Heather Schwarzkopf | Admin Assistant — office@newhopeadel.org

ELDERS

Ken Hykes | Mark Hantsbarger | Rick Ehrhardt | Dan Mahlum | Kevin Hircock

MINISTRY LEADERS

AWANA | Josh Heisterkamp — AWANA@newhopeadel.org
Caregiving | Rick & Rhonda Ehrhardt — ehrfour@aol.com
Children | Teresa Hall — Teresa@newhopeadel.org
Community Outreach | Lori Richardson — rir0411@yahoo.com
Connections | Heather Schwarzkopf — office@newhopeadel.org
Guest Relations | Randy & Deb Wonder - rwonderenterprises@yahoo.com
Small Groups | Bob and Teresa Hall — behall@aol.com
Hospitality | Barb & John Wright — bmw1824@gmail.com
Maintenance | Mark Hantsbarger — mhantsbarger@gmail.com
Men | Tim Canney — tcanney@aol.com
Preschool | Mickie Kinney — mickiek57@gmail.com
Students | Tim Canney — tcanney@aol.com
Tech | office@newhopeadel.org
Women | Joy Hawbaker — phawbaker@msn.com
Worship | Jeff Abbas — Jeff@newhopeadel.org
Young @ Heart | Stan & Mary Henderson — stanmary64@gmail.com
Youth Center | Lori Richardson — rir0411@yahoo.com

New Hope Church

Church 25712 Hwy 6 - Adel | Office 712 Cottage Street - Adel
P.O. Box 21 - Adel | 515-993-5325 | office@newhopeadel.org
Office Hours: Mon - Th 9:00am - 1:00pm | Fri noon - 4:00pm

INFO



Tonight

High School Missional Community | 4:00-7:00pm | Church Building
We will be participating in the Family Fun Night.

Wednesday, May 10

Middle School Missional Community | 6:30-8:00pm | Youth Center

Sundays

Adult Fellowship Class | 9:00 & 10:45am | Room 2
"Impacting the Next Generation for Jesus"

Today's Topic: *Transitioning into Adulthood in a Crazy Culture*
Next Week's Topic: *Teen Anthropology: What to Do When Our Kids Know More Than Us.*

Did you know . . . You can access the **online church directory** via the website or an app on your smartphone. To find someone's email or phone number, or put a face with a name, go to www.newhopeadel.org/my-new-hope for details on the app. **You can also give** to New Hope via our website and all of your devices! Whether you choose to give a one-time gift or set up your giving for automated weekly / monthly withdrawals, you won't ever have to write a check again! Go to our website at www.newhopeadel.org/my-new-hope/give for more details on online giving. If you have questions or need help, contact the church office.

New Hope Family, Thank you for the prayers, kind words, cards, notes, texts, visits, hugs, and flowers showered on our family following the passing of Carolyn's dad. We feel very loved and cared for.

Steve, Carolyn Meyer and family

Family Fun Night in Honor of Tricia Croushore

Who: Everyone

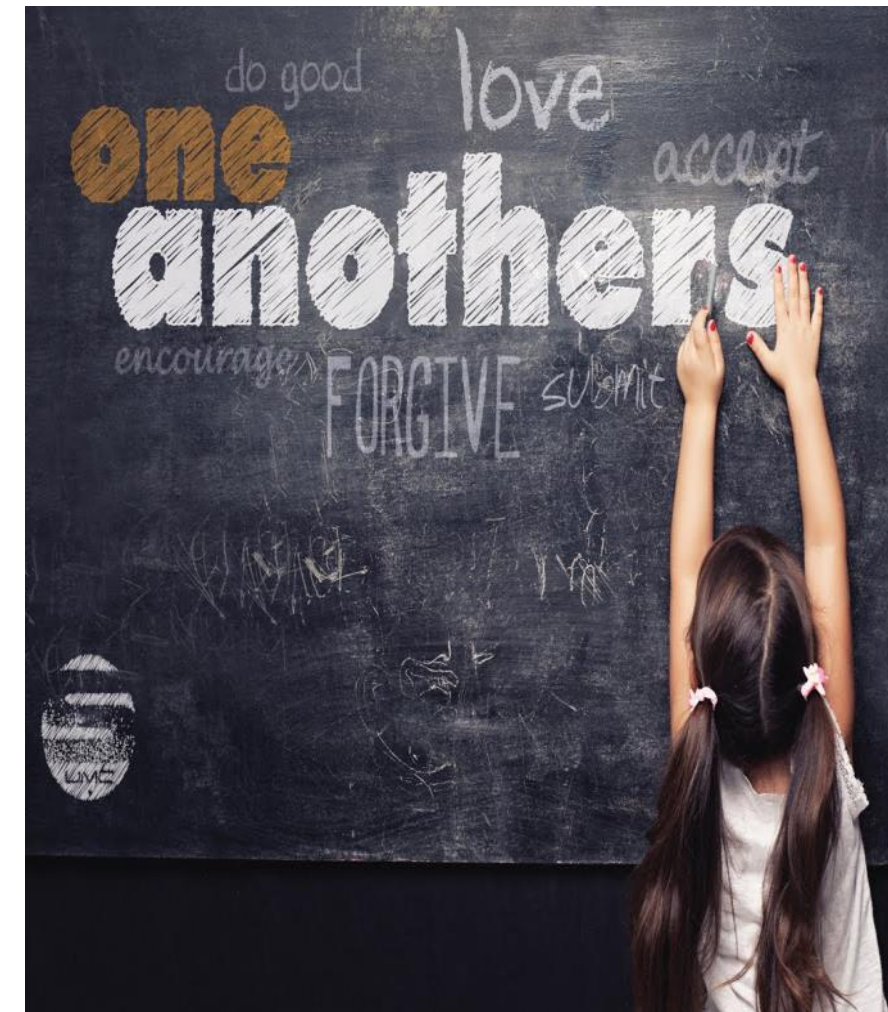
When: **TODAY 4:00-7:00 pm**

Where: New Hope Church

Why: To support Tricia and help her pay her medical bills as she battles cancer
Hot dog, Hamburgers, chips, sides, and dessert will be served.
We will have games, movies, a bonfire, and lots of fun!
Contact: Emily Nelson 515-414-9324



NEWHOPECHURCH



May 7, 2017
9:00 & 10:45 AM